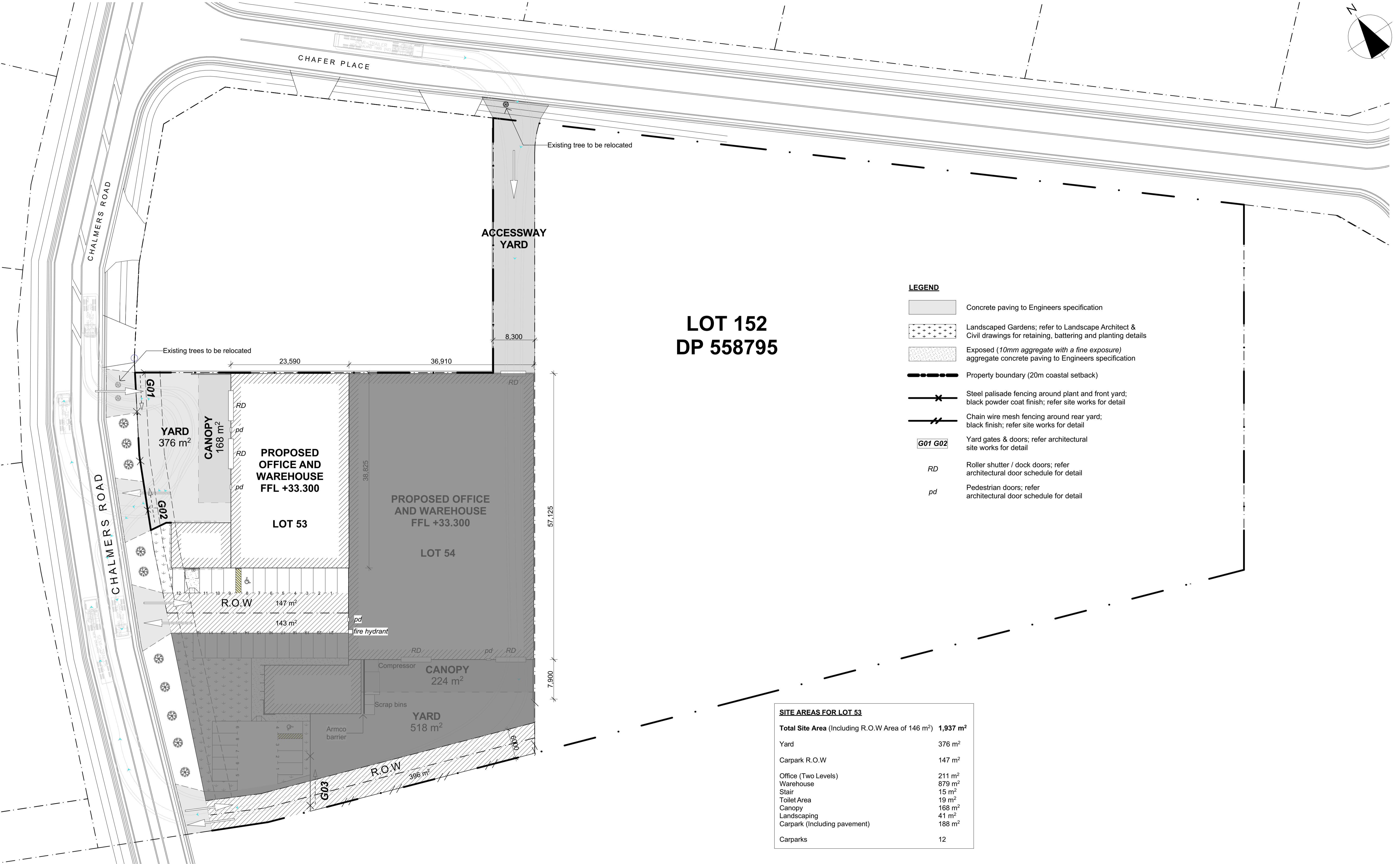
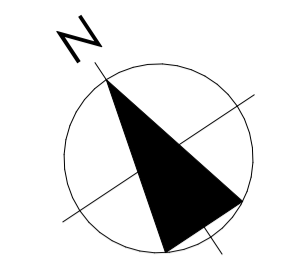


TE RAPA GATEWAY 45 CHALMERS RD







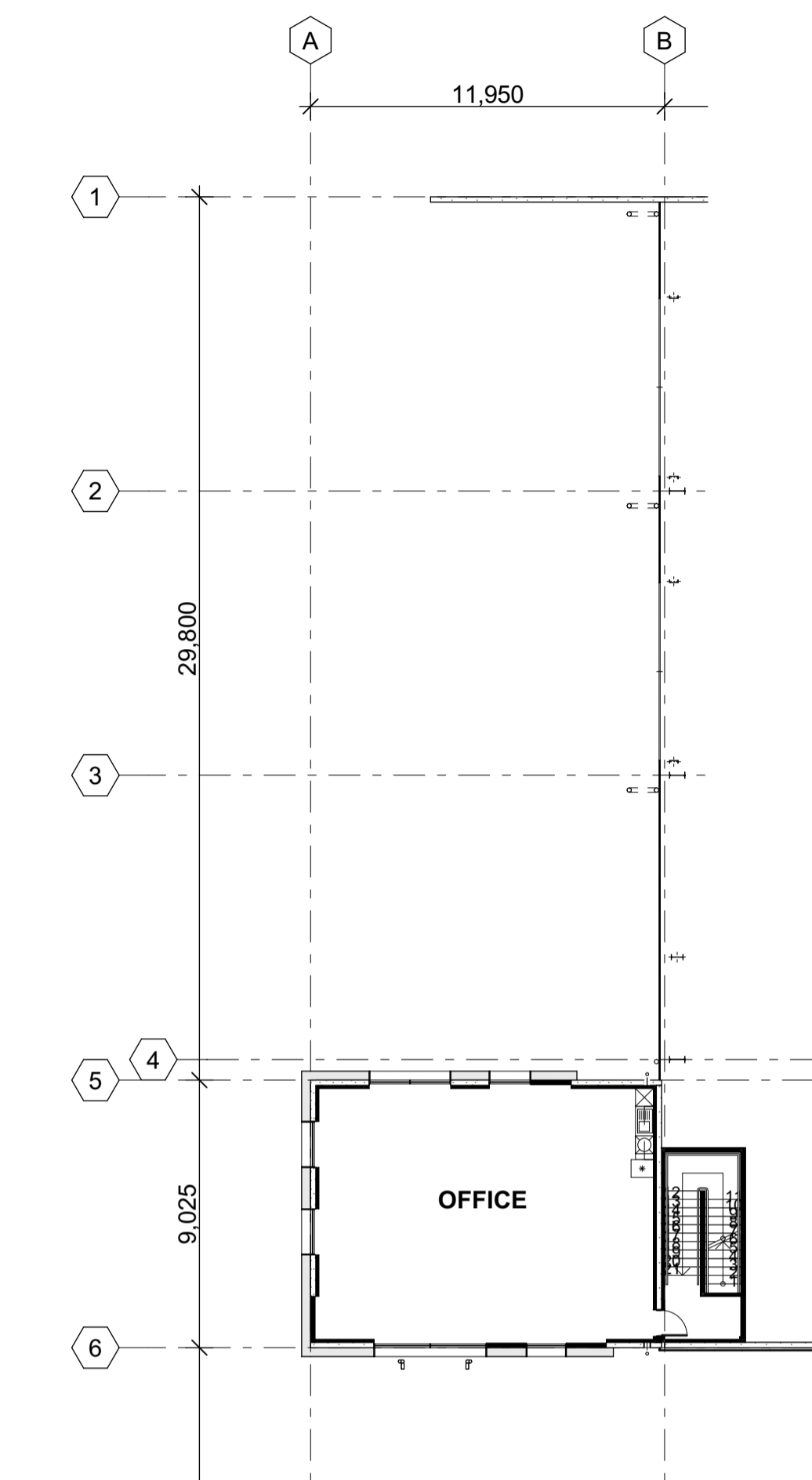
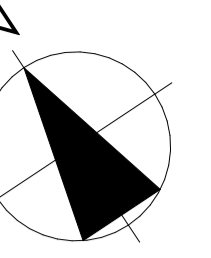
LOT 152 DP 58795

LEGEND

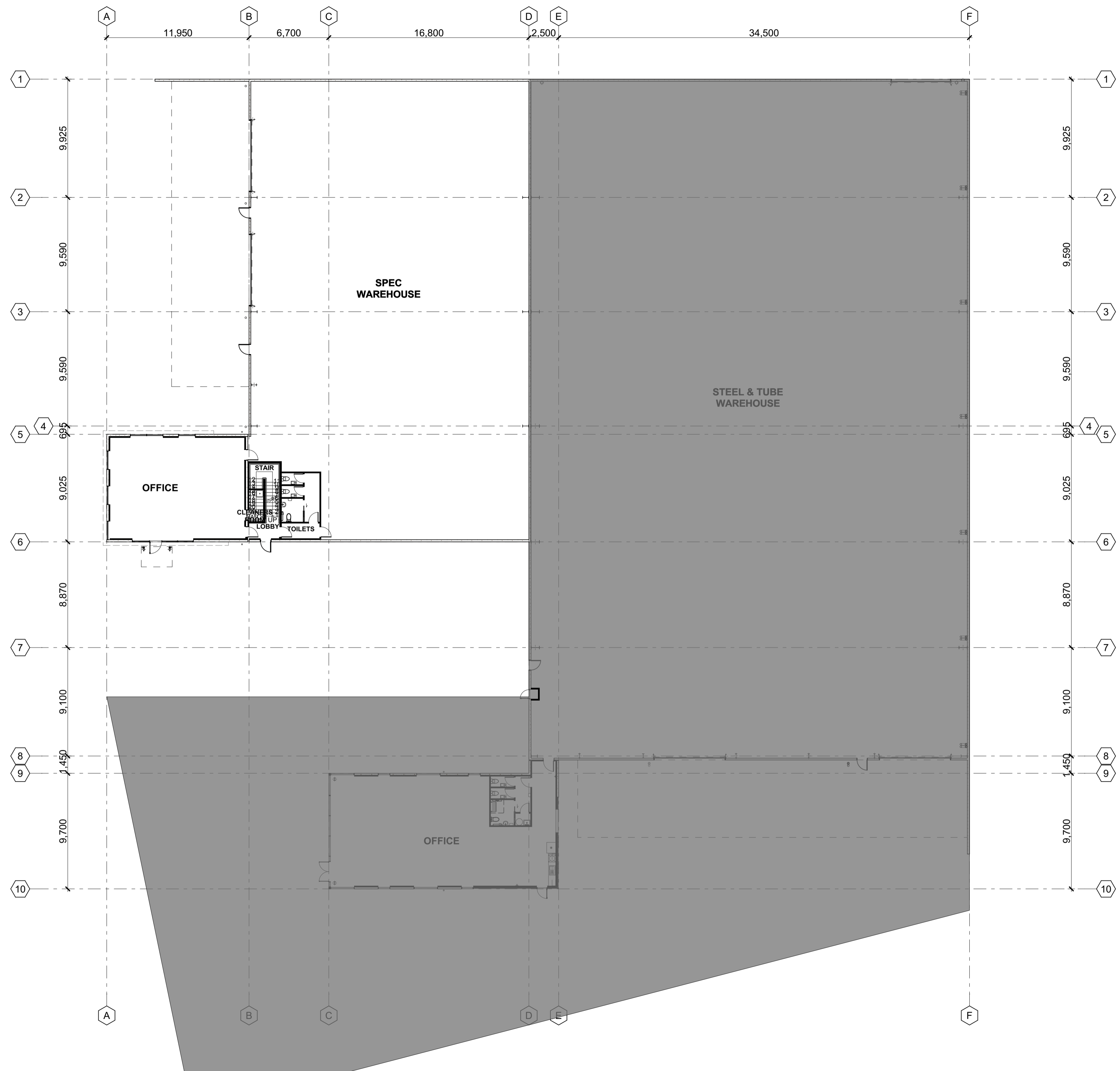
- Concrete paving to Engineers specification
- Landscaped Gardens; refer to Landscape Architect & Civil drawings for retaining, battering and planting details
- Exposed (10mm aggregate with a fine exposure) aggregate concrete paving to Engineers specification
- Property boundary (20m coastal setback)
- Steel palisade fencing around plant and front yard; black powder coat finish; refer site works for detail
- Chain wire mesh fencing around rear yard; black finish; refer site works for detail
- Yard gates & doors; refer architectural site works for detail
- Roller shutter / dock doors; refer architectural door schedule for detail
- Pedestrian doors; refer architectural door schedule for detail

SITE AREAS FOR LOT 53	
Total Site Area (Including R.O.W Area of 146 m²)	1,937 m²
Yard	376 m²
Carpark R.O.W	147 m²
Office (Two Levels)	211 m²
Warehouse	879 m²
Stair	15 m²
Toilet Area	19 m²
Canopy	168 m²
Landscaping	41 m²
Carpark (Including pavement)	188 m²
Carparks	12

SITE PLAN
scale 1:350 @ A1, 1:700 @ A3

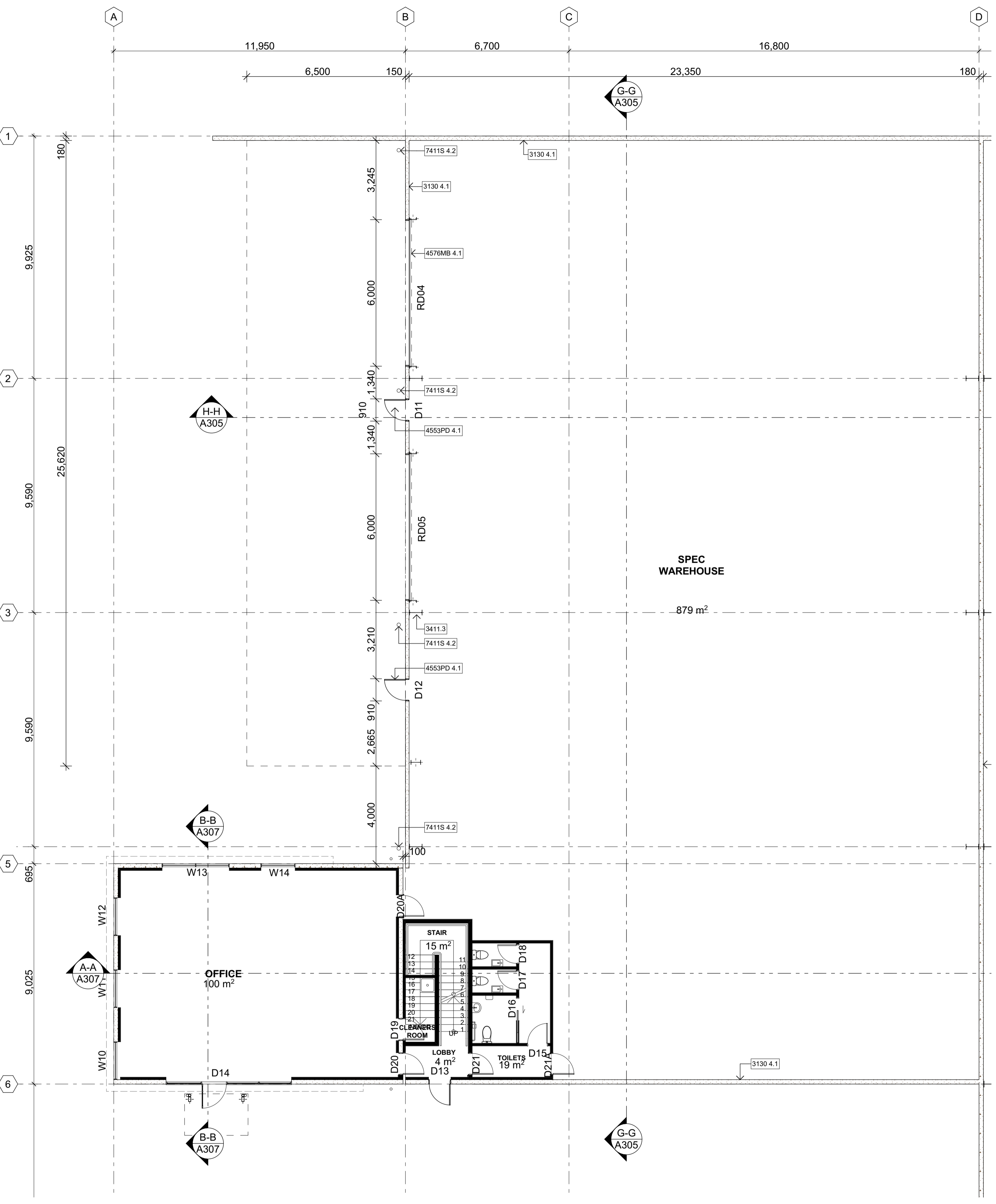


OVERALL FIRST FLOOR PLAN
scale 1:200 @ A1, 1:100 @ A3

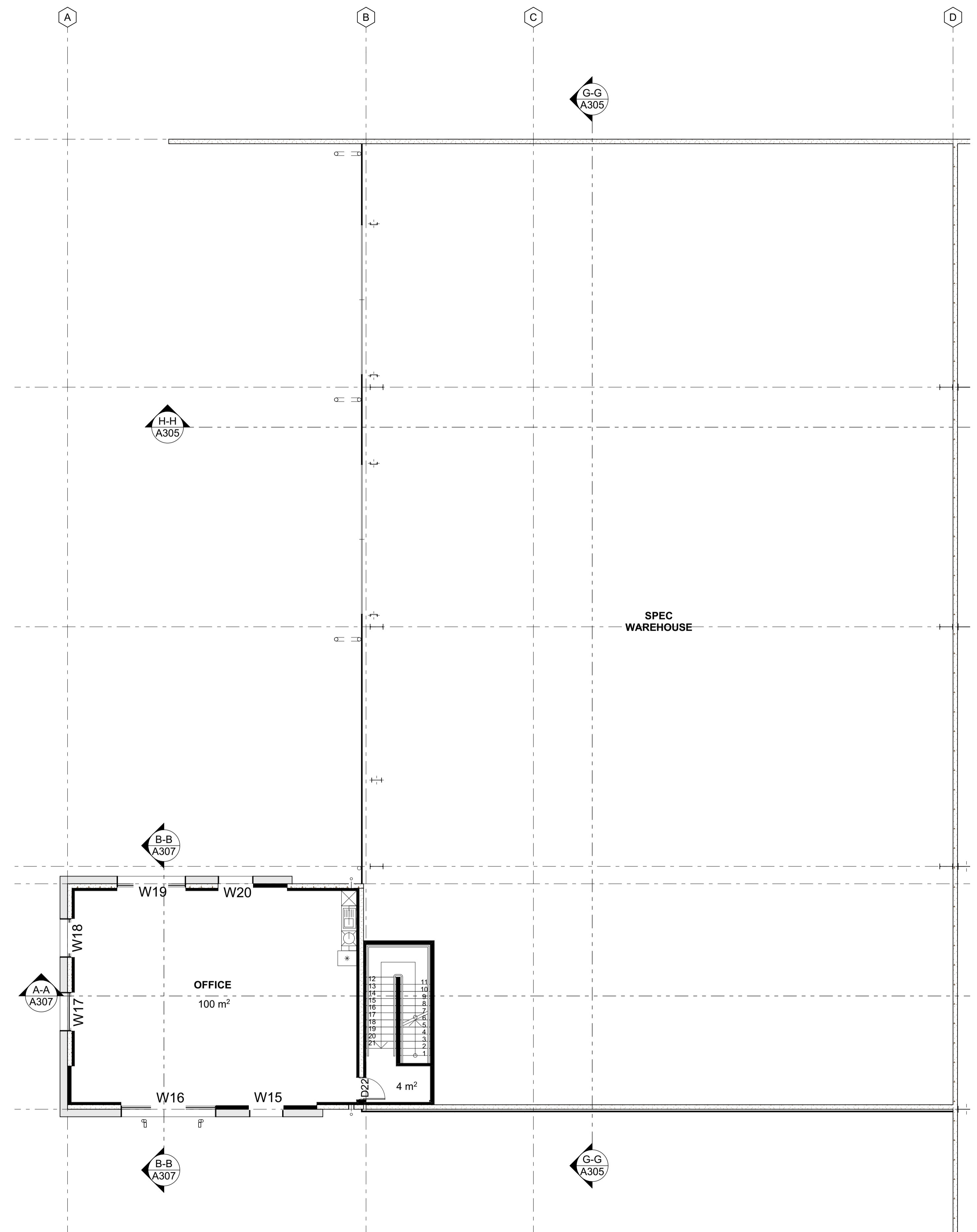


OVERALL GROUND FLOOR PLAN
scale 1:200 @ A1, 1:400 @ A3





SPEC WAREHOUSE GROUND FLOOR PLAN
 scale 1:100 @ A1, 1:200 @ A3



1 SPEC WAREHOUSE FIRST FLOOR PLAN
 TYP scale 1:100

KEYNOTES	
3130 4.1	PRECAST CONCRETE PANELS - NATURAL FINISH
3130 4.2	PRECAST CONCRETE EXPOSED AGGREGATE
3821 4.2	INTERIOR WALL FRAMING - RADIATA PINE
4241S 4.2	STEEL & TUBE - ST963, COMMERCIAL TRAPEZOIDAL CLADDING
4241SE 4.2	EUROLINE SEAMLOK CLADDING
4710P 4.2	PINK® BATTS® CLASSIC WALL INSULATION
4911 4.1	STAINLESS STEEL HANDRAIL
5113 4.1	PLASTERBOARD LININGS - STANDARD SYSTEMS - WALLS
5113 4.3	PLASTERBOARD LININGS - FIRE RATED SYSTEMS - WALLS
7411S 4.3	100MM METAL DOWNPIPES
3882.6	H1.2 140x45MM TIMBER FRAMING @ 400CRS MAX

SPEC WAREHOUSE&OFFICE:

WAREHOUSE AREA: 879M²
 YARD: 376M²
 CANOPY: 168M²
 OFFICE AREA GF: 107M²
 OFFICE AREA FF: 104M²
 STAIR: 15M²
 TOILET AREA: 19M²

FRAMING NOTES

ALL WORKS TO COMPLY WITH RELEVANT CLAUSES OF THE NZBC

READ DRAWINGS IN CONJUNCTION WITH ENGINEERS DRAWINGS

READ DRAWINGS IN CONJUNCTION WITH ARCHITECTS SPECIFICATION

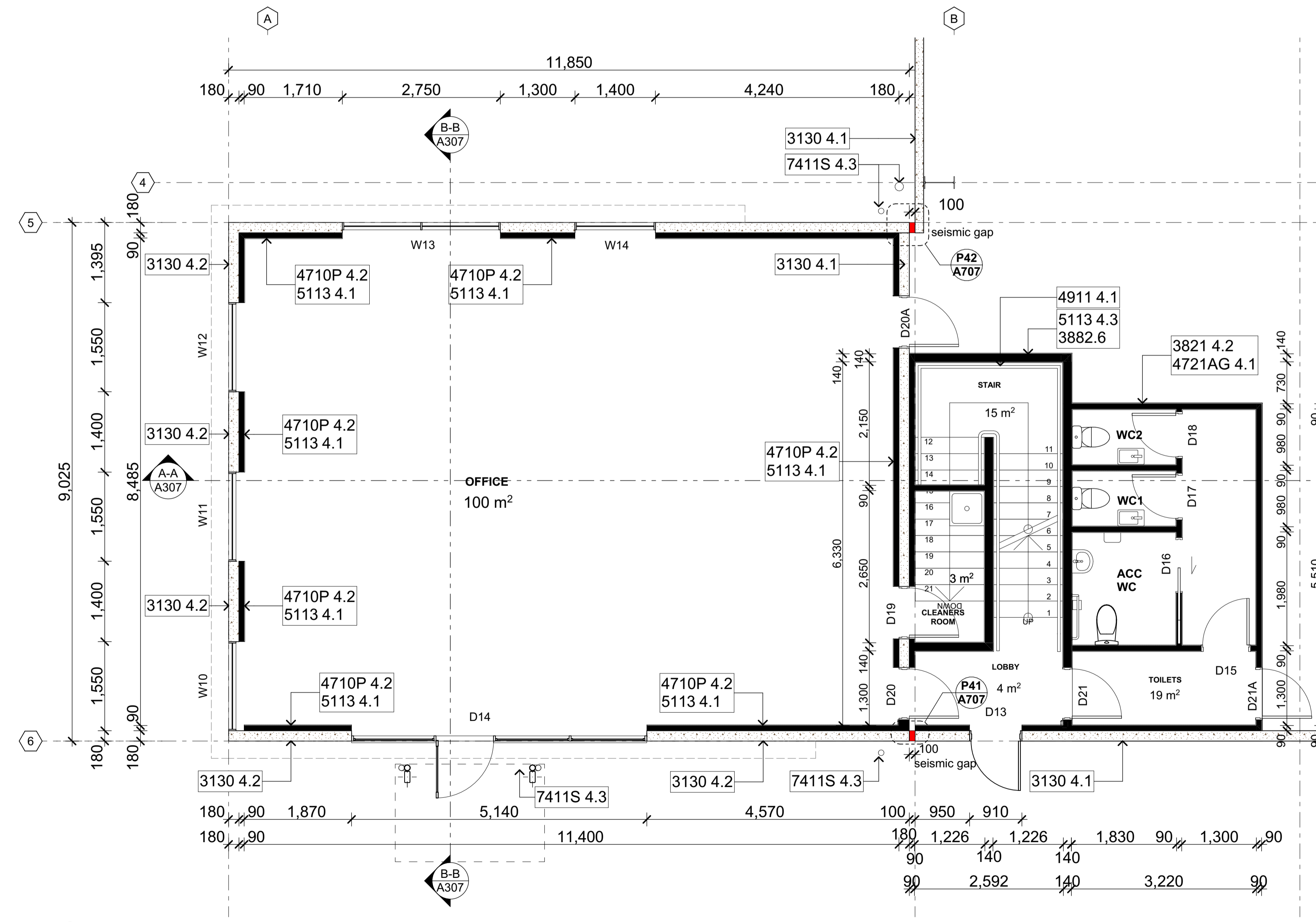
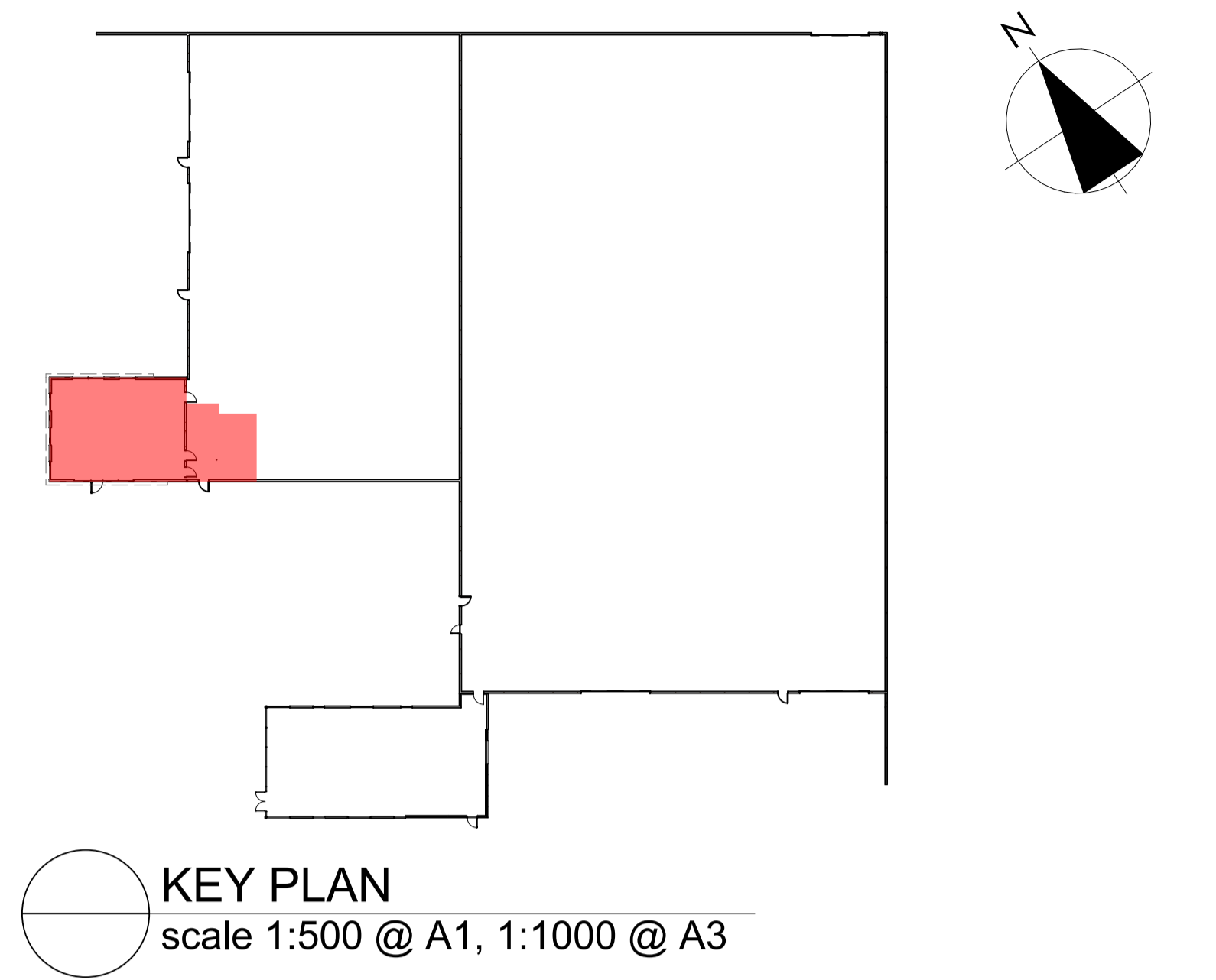
ALL STRUCTURAL TIMBER USED TO BE STRUCTURAL GRADE TO COMPLY WITH THE CURRENT EDITION NZS3603 AND MARKED ACCORDINGLY TO COMPLY WITH THE CURRENT EDITION NZS 3622. ALL TIMBER SIZES ARE WORKED FROM THE SG8 TABLES FROM NZS:3604:2011. (THE YELLOW TABLES) THEREFORE ALL STRUCTURAL TIMBER SHOULD BE SG8 UNLESS OTHERWISE SPECIFIED

WALL FRAMING LEGEND:

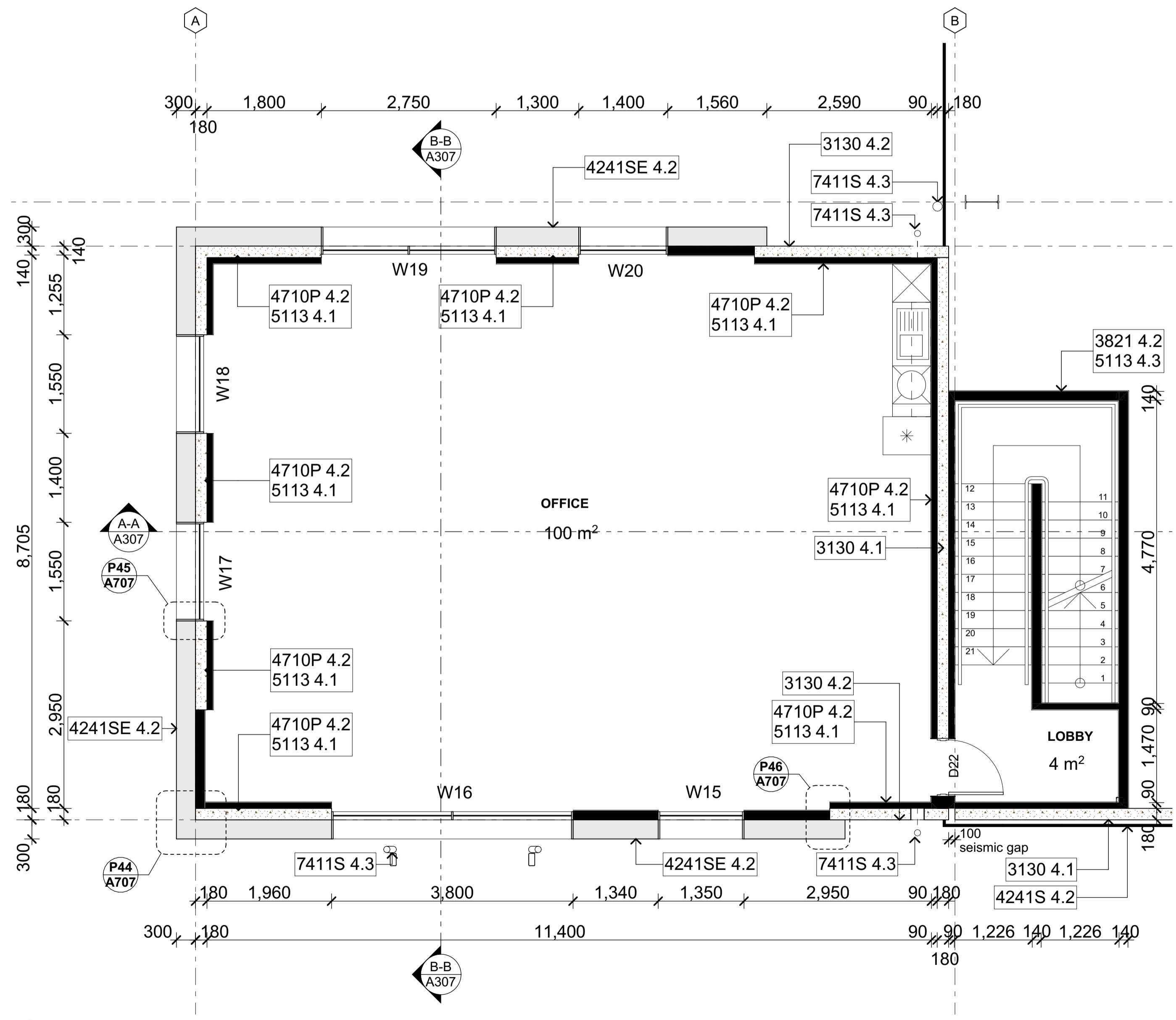
EXTERNAL TIMBER STUD WALLS	
140mm THICK	140x45mm @ 400CRS

INTERNAL TIMBER STUD WALLS	
140mm THICK	140x45mm @ 600CRS
90mm THICK	90x45mm @ 600CRS

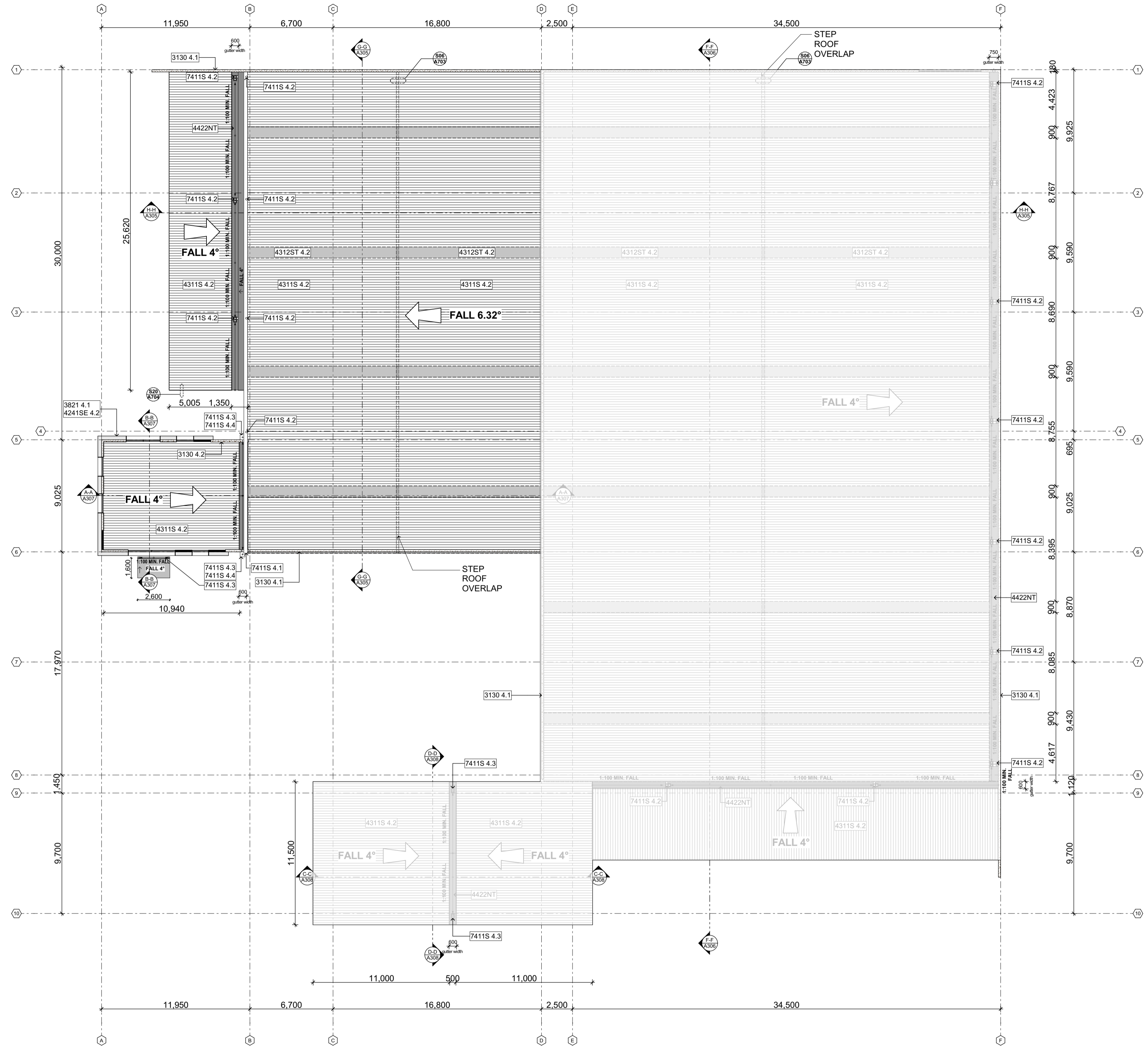
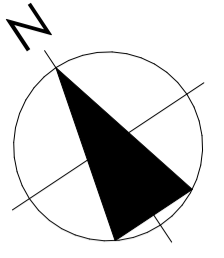
INTERNAL METAL STUD WALLS	
92mm THICK	92mm x 0.55BMT@600CRS



01 PART REFERENCE PLAN: GROUND FLOOR
 Scale 1:500@A1 1:1000@A3



02 PART REFERENCE PLAN: FIRST FLOOR
 Scale 1:500@A1 1:1000@A3



ROOF NOTES

ALL WORKS TO COMPLY WITH RELEVANT CLAUSES OF THE NZBC

ALL ROOF FLASHINGS AND ROOF FLASHING DETAILS TO COMPLY WITH E2 OF THE NZBC

ALL ROOF PENETRATION DETAILS TO COMPLY WITH E2 OF THE NZBC

READ DRAWINGS IN CONJUNCTION WITH HYDRAULIC DRAWINGS

READ DRAWINGS IN CONJUNCTION WITH THE FIRE REPORT AND ACOUSTIC REPORT

READ DRAWINGS IN CONJUNCTION WITH ARCHITECTS SPECIFICATION AND FITTINGS SCHEDULE.

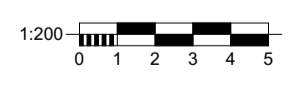
ALL FITTINGS TO BE OF GOOD QUALITY & FIT FOR PURPOSE

ALL DP & GUTTER SIZES TO COMPLY WITH E1 OF THE NZBC

REFER TO SPECIFICATIONS FOR ALL ROOF PLANT, ACCESS & FALL ARREST.

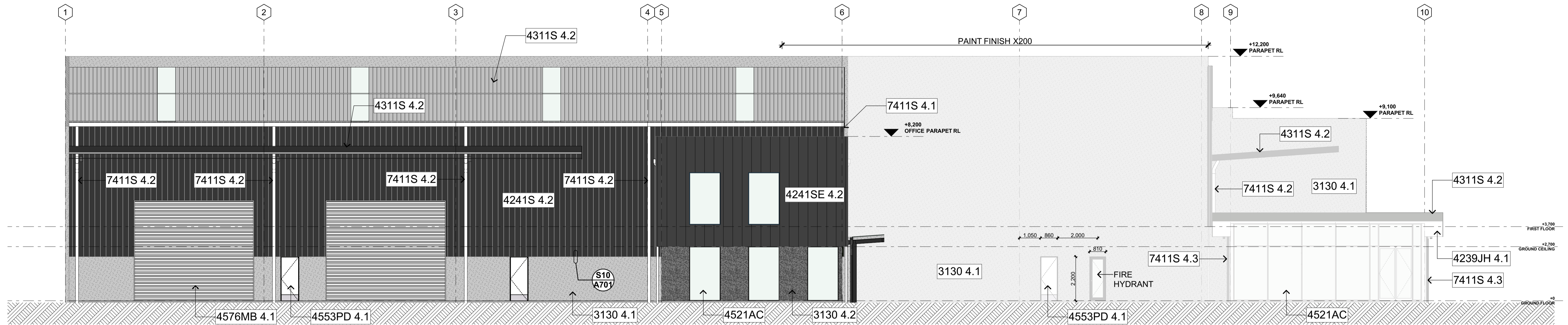
ROOF PLAN
scale 1:200@A1 1:400@A3

- KEYNOTES**
- 3130 4.1 PRECAST CONCRETE PANELS - NATURAL FINISH
 - 3130 4.2 PRECAST CONCRETE EXPOSED AGGREGATE
 - 3821 4.1 EXTERIOR WALL FRAMING - RADIATA PINE
 - 4241SE 4.2 EUROLINE SEAMLOK CLADDING
 - 4311S 4.2 STEEL & TUBE - ST963, COMMERCIAL TRAPEZOIDAL ROOFING
 - 7411S 4.1 STEEL & TUBE SPOUTING 300 GUTTER
 - 7411S 4.2 150MM UPVC DOWNPIPES
 - 7411S 4.3 100MM METAL DOWNPIPES
 - 7411S 4.4 METAL RAINWATER HEADS, DROPPERS, OVERFLOWS

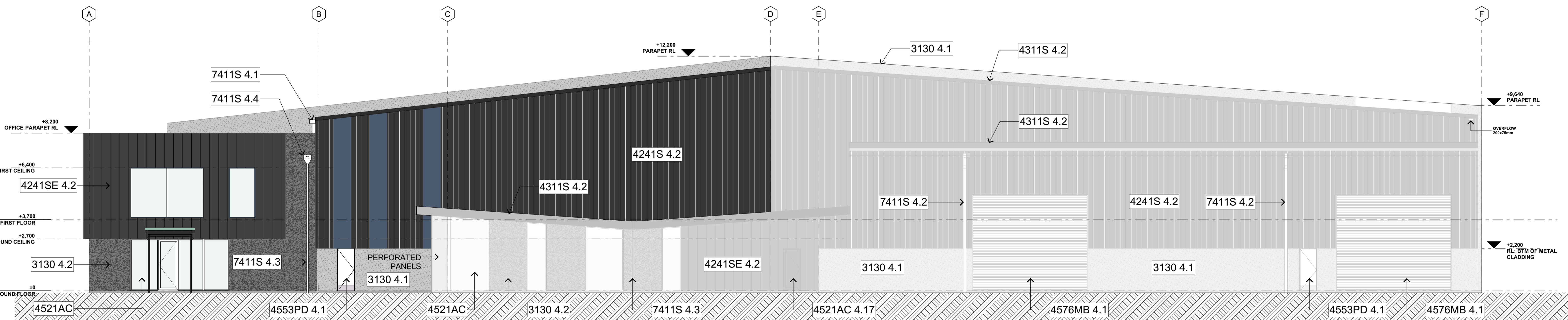


KEYNOTES

- 3130 4.1 PRECAST CONCRETE PANELS - NATURAL FINISH
- 3130 4.2 PRECAST CONCRETE EXPOSED AGGREGATE
- 4239JH 4.1 VILLABOARD™ SOFFIT LINING - FLUSH JOINTED
- 4241S 4.2 STEEL & TUBE - ST963, COMMERCIAL TRAPEZOIDAL CLADDING
- 4241SE 4.2 EUROLINE SEAMLOK CLADDING
- 4311S 4.2 STEEL & TUBE - ST963, COMMERCIAL TRAPEZOIDAL ROOFING
- 4521AC 4.17 APL MAGNUM SERIES - HINGED DOOR
- 4553PD 4.1 PARKWOOD EGRESS PERSONNEL ACCESS DOORS - ALUMINIUM DOOR & FRAME SYSTEM
- 4576MB 4.1 METALBILT STEEL ROLLER SHUTTER
- 7411S 4.1 STEEL & TUBE SPOUTING 300 GUTTER
- 7411S 4.2 150MM UPVC DOWNPIPES
- 7411S 4.3 100MM METAL DOWNPIPES
- 7411S 4.4 METAL RAINWATER HEADS, DROPPERS, OVERFLOWS

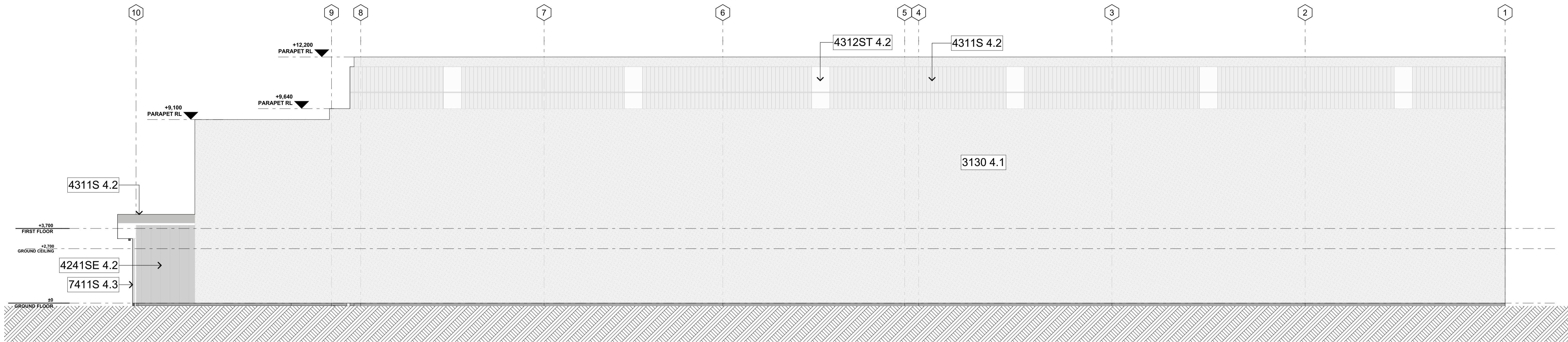


1 WEST ELEVATION
Scale 1:100@A1 1:200@A3

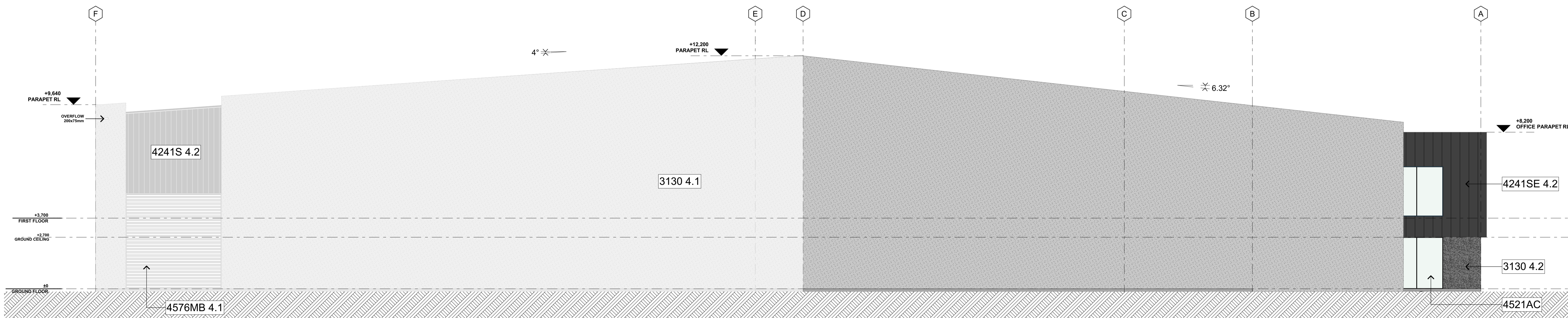


1 SOUTH ELEVATION
Scale 1:100@A1 1:200@A3

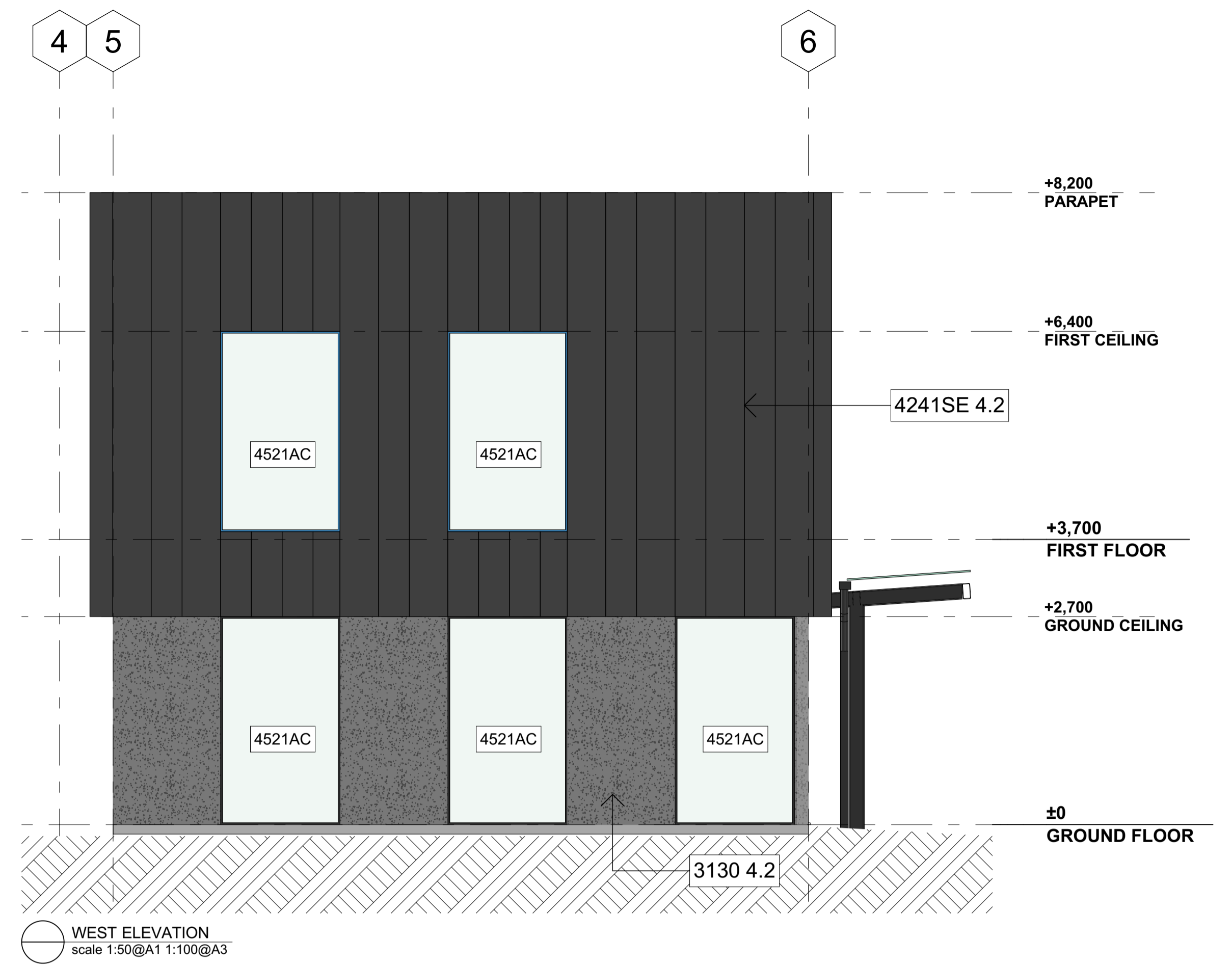
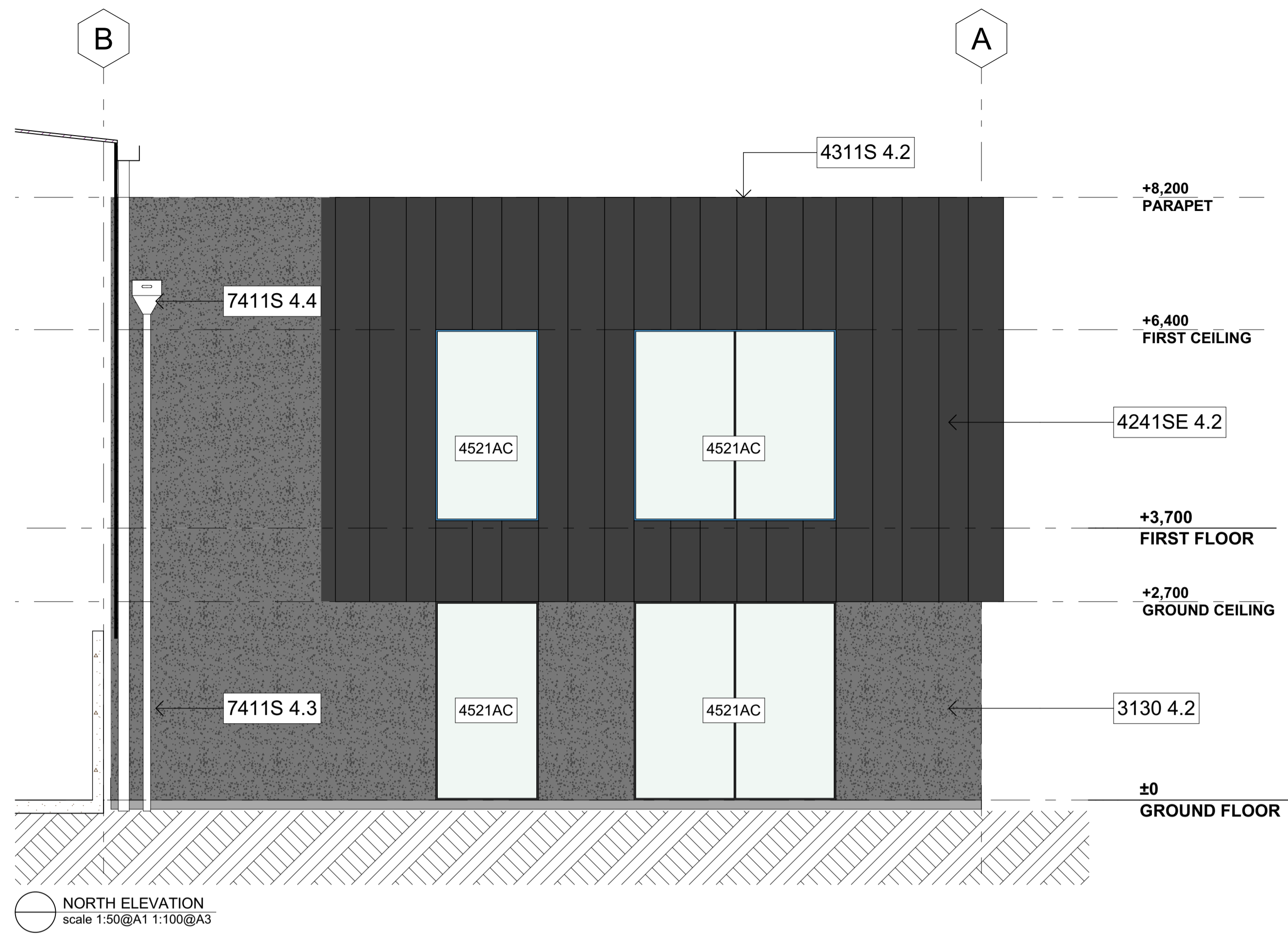
KEYNOTES	
3130 4.1	PRECAST CONCRETE PANELS - NATURAL FINISH
3130 4.2	PRECAST CONCRETE EXPOSED AGGREGATE
4241S 4.2	STEEL & TUBE - ST963, COMMERCIAL TRAPEZOIDAL CLADDING
4241SE 4.2	EUROLINE SEAMLOK CLADDING
4311S 4.2	STEEL & TUBE - ST963, COMMERCIAL TRAPEZOIDAL ROOFING
4312ST 4.2	ALSYNITE TRANSLUCENT SHEETING
4576MB 4.1	METALBILT STEEL ROLLER SHUTTER
7411S 4.3	100MM METAL DOWNPIPES



1 EAST ELEVATION
Scale 1:100@A1 1:200@A3

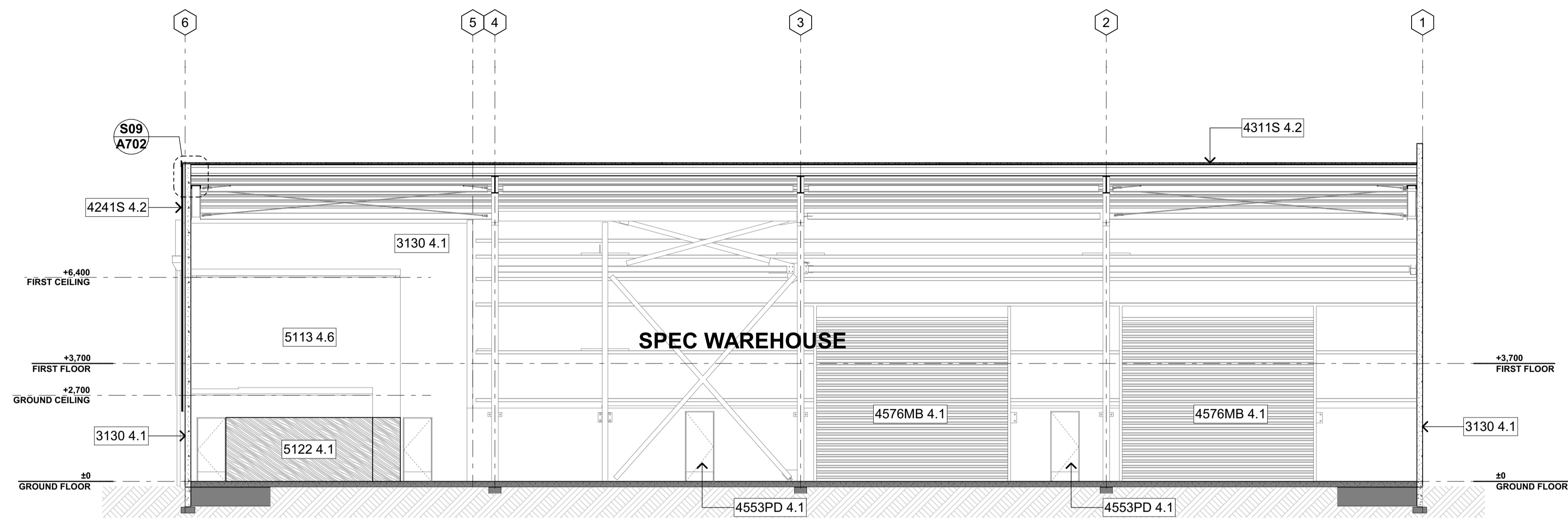


1 NORTH ELEVATION
Scale 1:100@A1 1:200@A3

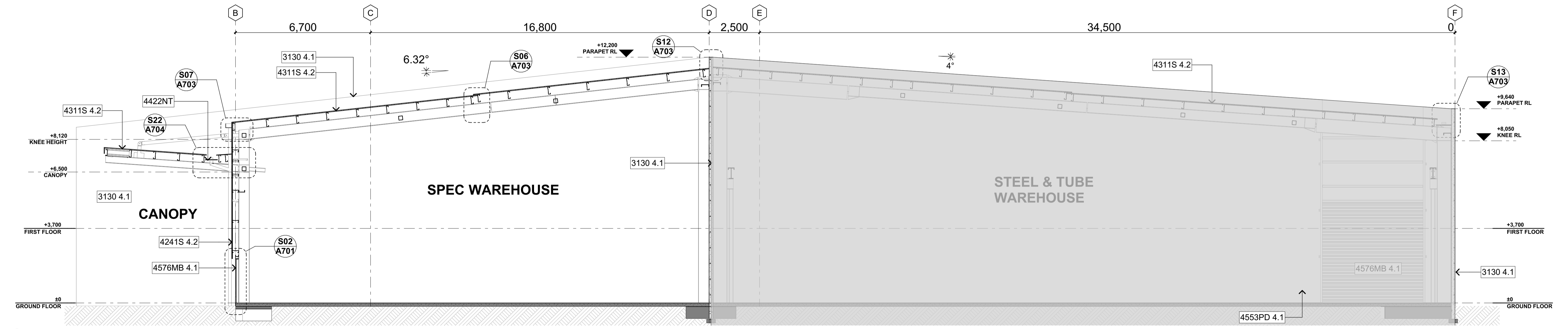


- KEYNOTES**
- 3130 4.2 PRECAST CONCRETE EXPOSED AGGREGATE
 - 4241SE 4.2 EUROLINE SEAMLOK CLADDING
 - 4311S 4.2 STEEL & TUBE - ST963, COMMERCIAL TRAPEZOIDAL ROOFING
 - 7411S 4.3 100MM METAL DOWNPIPES
 - 7411S 4.4 METAL RAINWATER HEADS, DROPPERS, OVERFLOWS

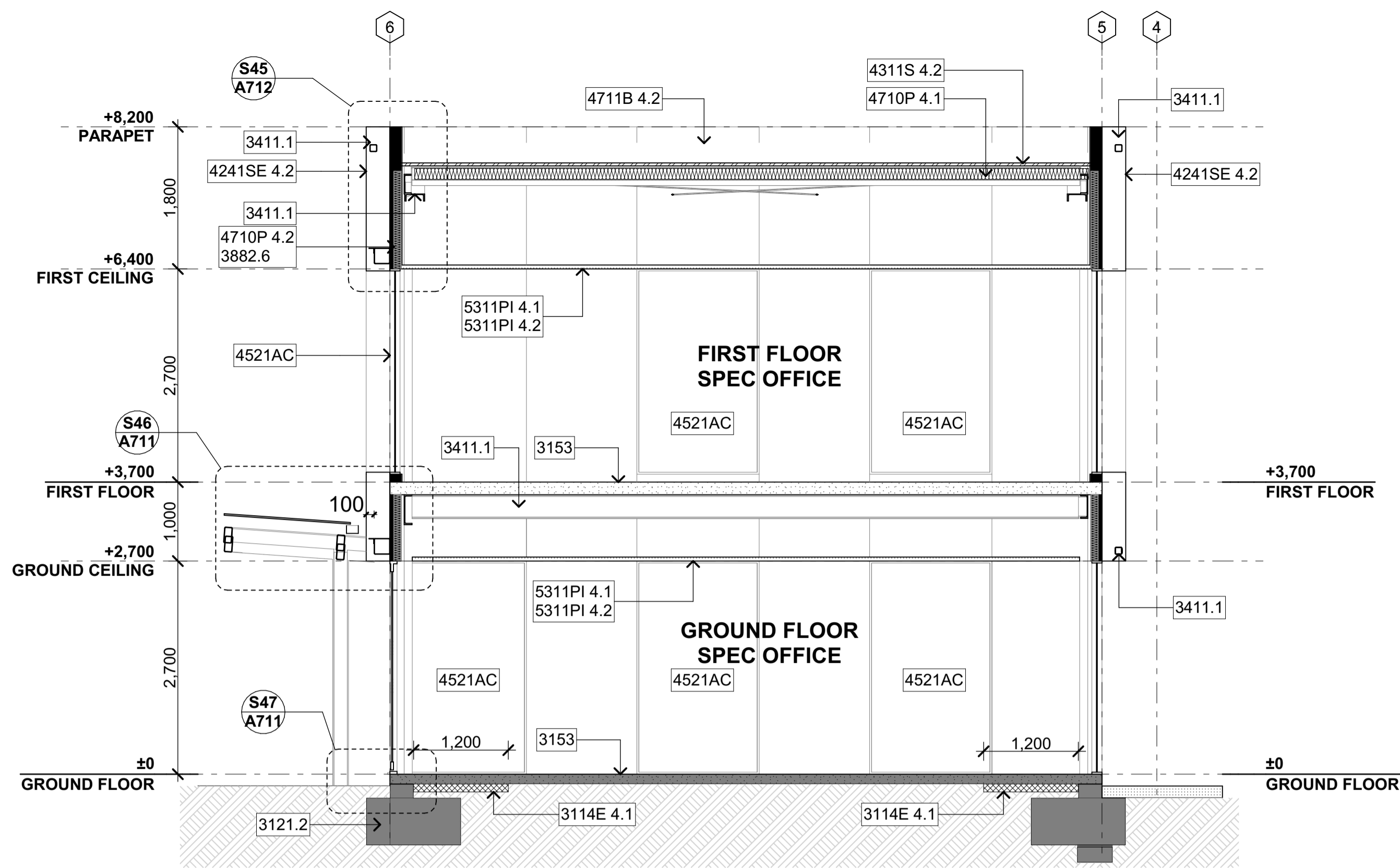
KEYNOTES	
3130 4.1	PRECAST CONCRETE PANELS - NATURAL FINISH
4241S 4.2	STEEL & TUBE - ST963, COMMERCIAL TRAPEZOIDAL CLADDING
4311S 4.2	STEEL & TUBE - ST963, COMMERCIAL TRAPEZOIDAL ROOFING
4553PD 4.1	PARKWOOD EGRESS PERSONNEL ACCESS DOORS - ALUMINIUM DOOR & FRAME SYSTEM
4576MB 4.1	METALBILT STEEL ROLLER SHUTTER
5113 4.6	PLASTERBOARD LININGS - FIRE RATED SYSTEMS - CEILINGS
5122 4.1	12MM PLYWOOD LINING - WALLS & CEILINGS



G-G SECTION GG
A201 Scale 1:100@A1 1:200@A3

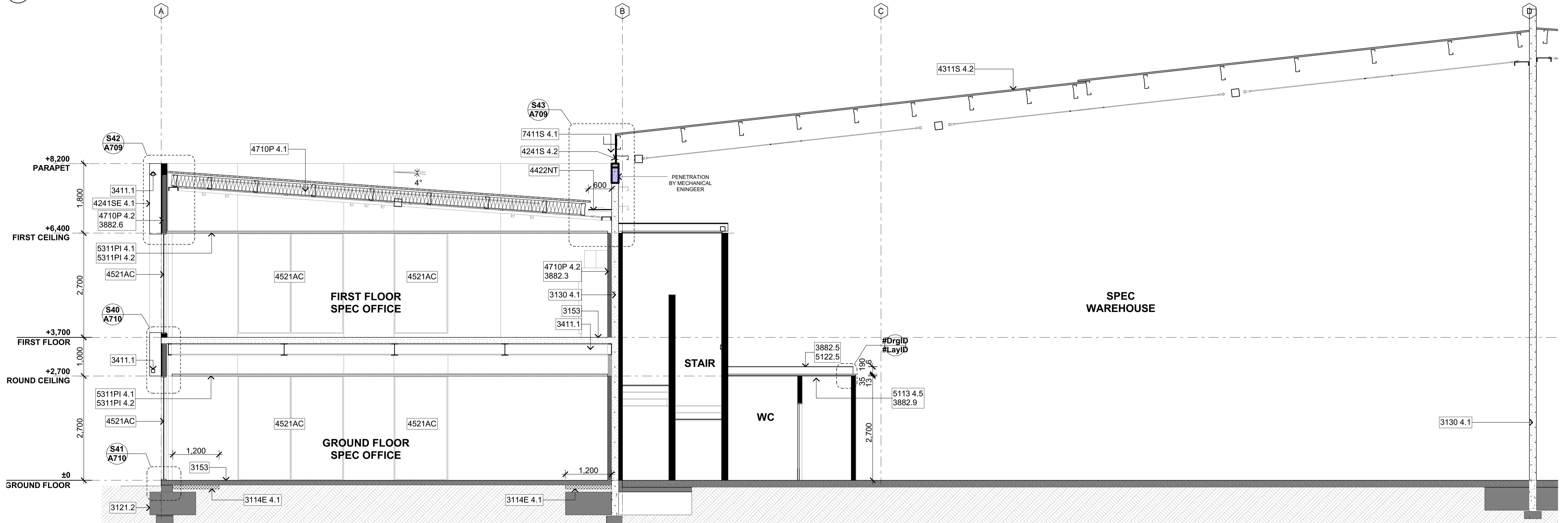


H-H SECTION HH
A201 Scale 1:100@A1 1:200@A3



B-B SPEC OFFICE SECTION BB
 A203 Scale 1:50@A1 1:100@A3

- KEYNOTES**
- 3114E 4.1 EXPOL THERMASLAB VH GRADE
 - 3130 4.1 PRECAST CONCRETE PANELS - NATURAL FINISH
 - 4241S 4.2 STEEL & TUBE - ST963, COMMERCIAL TRAPEZOIDAL CLADDING
 - 4241SE 4.1 COATING SYSTEM - EXPOSURE ZONE B-C
 - 4241SE 4.2 EUROLINE SEAMLOK CLADDING
 - 4311S 4.2 STEEL & TUBE - ST963, COMMERCIAL TRAPEZOIDAL ROOFING
 - 4710P 4.1 PINK® BATTS® ULTRA® SKILLION ROOF INSULATION
 - 4710P 4.2 PINK® BATTS® CLASSIC WALL INSULATION
 - 5113 4.2 PLASTERBOARD LININGS - WATER RESISTANT SYSTEMS - WALLS
 - 5113 4.5 PLASTERBOARD LININGS - WATER RESISTANT SYSTEMS - CEILINGS
 - 5311PI 4.1 RONDO DONN® SUSPENSION SYSTEM, ACOUSTICAL
 - 5311PI 4.2 CEILING TILES - AMF THERMATIX
 - 5311PI 4.5 PERIMETER TRIM
 - 7411S 4.1 STEEL & TUBE SPOUTING 300 GUTTER
 - 3121.2 CONCRETE FOUNDATIONS - REFER STRUCTURAL DRAWINGS FOR DETAILS
 - 3153 CONCRETE FLOOR SLAB - REFER STRUCTURAL DRAWINGS FOR DETAILS
 - 3411.1 STEEL BEAM - REFER STRUCTURAL DRAWINGS FOR DETAILS
 - 3882.3 H3.2 90x45MM TIMBER FRAMING @ 400CRS MAX
 - 3882.5 H1.2 190x45MM TIMBER RAFTERS @ 400CRS MAX
 - 3882.6 H1.2 140x45MM TIMBER FRAMING @ 400CRS MAX
 - 3882.9 H1.2 TIMBER BATTEN 70X35
 - 5122.5 6MM PLYWOOD LINING



A-A SPEC OFFICE SECTION AA
 A203 Scale 1:50@A1 1:100@A3